

Sentry Firmware Updates

Firmware Updates

ToolingSentry units contain two microprocessors:

- 1) The **communication** processor, providing Ethernet communications.
- 2) The **application** processor which handles the ADM validation tasks.

Both processors are re-programmable in the field when, from time to time, new firmware is released.

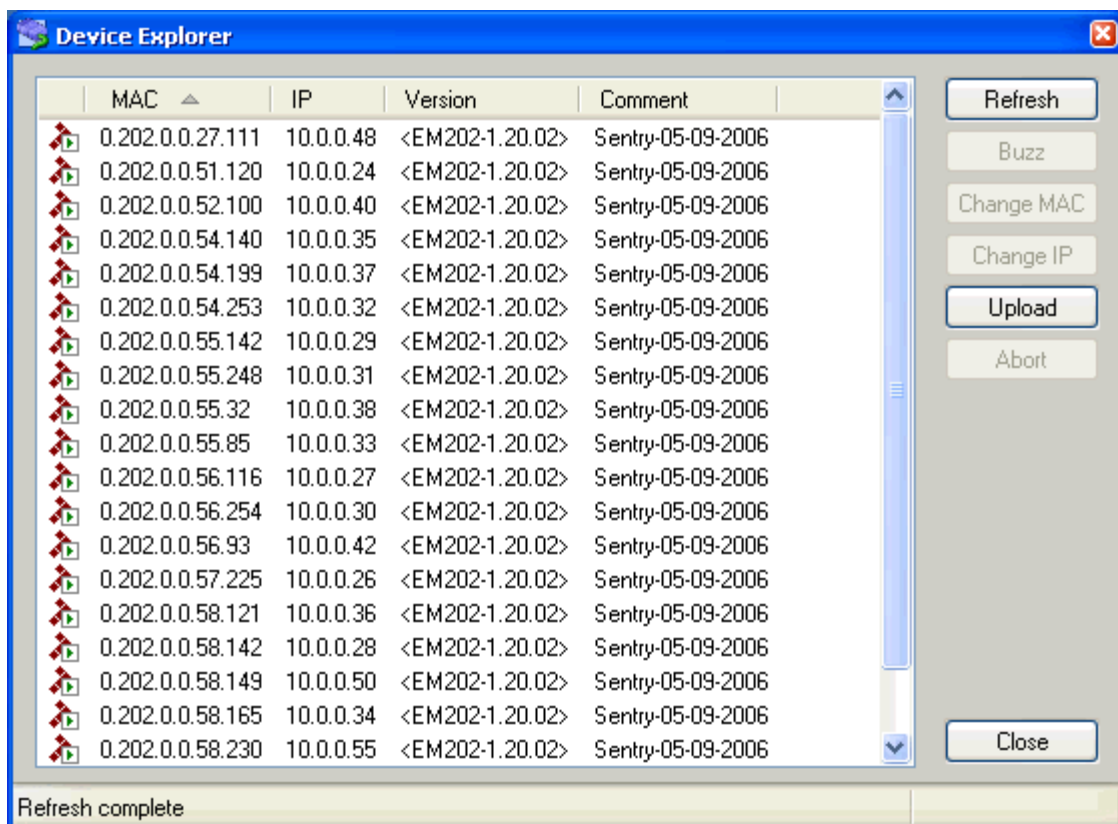
Re-programming the communication processor

The Sentry's **communication processor** has two layers of software, the *firmware layer* and the *application layer*. Both layers may be reprogrammed if necessary using the *device explorer* utility.

You will need administrator privileges on your PC to do this.

Download ToolingSentry Communication Processor Programming.zip and extract its contents to a working folder then run the included *install.bat* file to register this utility on your PC.

Run the Device Explorer by double-clicking on the *em202upgr.vbs* file and a window should open listing all the ToolingSentries it can find on your network, showing details of the installed firmware in the version column and the installed application in the Comment column. If you have a firewall enabled you may be asked to *unblock* the program to allow it to access your network.



The **communications firmware** can be downloaded from the software page.
In the Device Explorer, shift-click, ctrl-click etc to select the ToolingSentries which you wish to re-program.
Click Upload and select *Load Firmware Through the Network*.
Locate and open the downloaded firmware (.bin) file. It will then be uploaded into all the selected ToolingSentries.

The **communications application** can be downloaded from the software page.
In the Device Explorer, shift-click, ctrl-click etc to select the ToolingSentries which you wish to re-program.
Click Upload and select *Load Application Through the Network*.
Locate and open the downloaded application (.tpc) file. It will then be uploaded into all the selected ToolingSentries.
When firmware and application layer programming is complete, the device explorer may be closed.

Re-programming the Application processor

The Sentry's **application processor** can be re-programmed.
The ToolingSentry's communication processor must first be working properly and should itself be running the correct application in order to successfully re-program the application processor.

Download Setup Sentry Application Programmer.msi to a working folder then run the installation.

You will need Administrator privileges on your PC to do this.

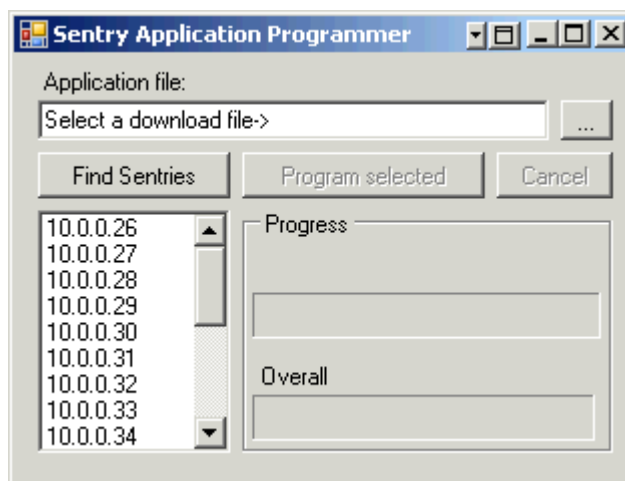
This software relies on Microsoft .NET framework 2.0 being installed on your PC.

If you need to install it, it can be downloaded from Microsoft.

Stop any running applications on your PC, and any others on your network, which may be communicating with the ToolingSentry network (ADM or SentryHub for example).

Run the re-programming application *Start...All Programs...Sentry...Sentry Application Programmer*

If you have a firewall enabled, you may be asked to unblock this program to allow it to access your network.



The Application Programmer scans your local network and fills the list box with the IP addresses of all the ToolingSentries it can find.

Click the *Find Sentries* button if you want to rescan the network.

Download the application file to a working directory on your PC.

The **application file** can be downloaded from the software page.

Press the `...' Button then browse to select the downloaded file.

Use shift-click, ctrl-click etc in the list box to select the ToolingSentries which you wish to re-program.

Click the *Program selected* button.

You should see the progress bar grow; when the process is finished the Programmer may be closed.

Sometimes it is necessary to power the ToolingSentries off and then back on again after reprogramming the application.

For more information please contact our sales department.

sales@circuitmaster.co.uk or +44 (0) 1706 630 606