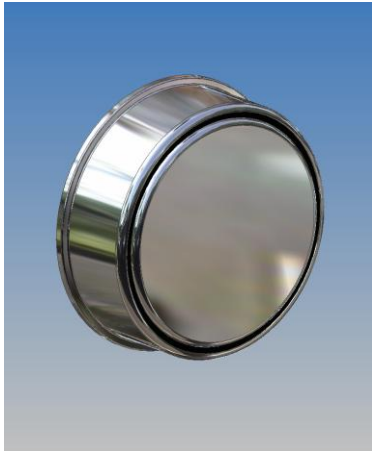


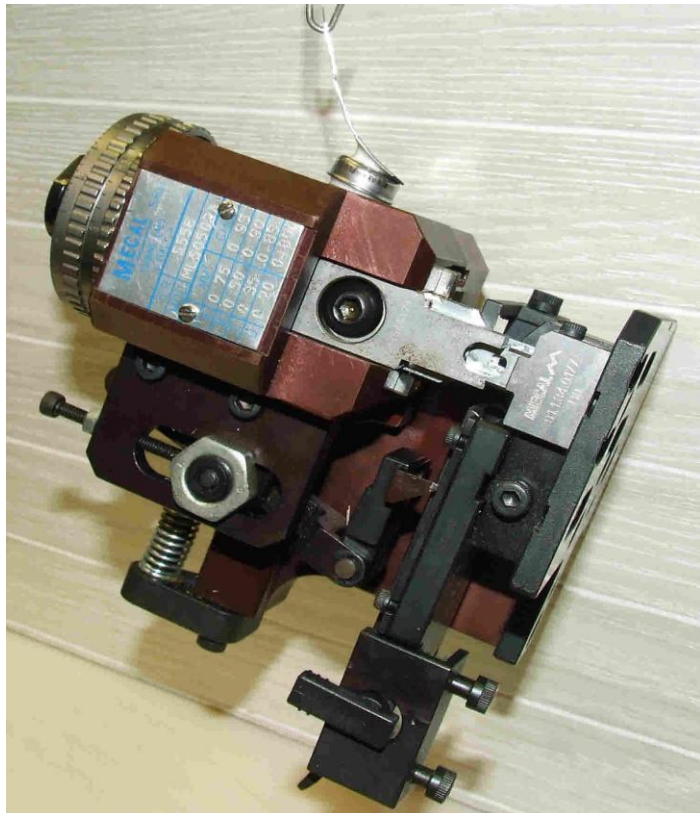
eTag installation



Instructions / notes

- A target fixing position on the applicator should be selected such that it will be easy to connect the cable when the applicator is installed on a press and that the connector/cable will not interfere with the crimping process.
- Prepare the target area by degreasing it, wiping with Iso-Propyl Alcohol or similar degreasing solvent.
- E-tags come with an adhesive pad pre-applied to the back face. Peel the backing paper from the adhesive pad. Be careful not to contaminate the freshly exposed adhesive surface with dirt or grease.
- Press the e-tag into position on the applicator. Take care to position it correctly first time because the adhesive grips instantly. Peeling the e-tag off to reposition it would severely reduce the strength of the bond.
- The e-tag can be used immediately but the strength of the bond does increase to its maximum during the first 24 hours.

The photo opposite illustrates the bond strength. A 4.3kg applicator is suspended using only its e-tag. Of course in normal use it should never experience this sort of load.



For more information please contact our sales department.
sales@circuitmaster.co.uk or +44 (0) 1706 630 606